

# **Simple Shutdown Software (Windows Version)**

## **Instruction Manual**

Thank you for using our product.

Described in this document are the installation instructions, methods of use, and precautions for use for the Simple Shutdown Software (Windows Version). Read this manual thoroughly before use.

Additionally, make sure you read the “UPS (Uninterruptible Power Supply) Instruction Manual” before using this software.

### **■ Table of Contents ■**

<b>The intended usages.....</b>	<b>- 2 -</b>
<b>Software License Terms.....</b>	<b>- 2 -</b>
<b>Request during Operation .....</b>	<b>- 3 -</b>
<b>Connection Method to the UPS.....</b>	<b>- 4 -</b>
<b>Before Installing the Software.....</b>	<b>- 6 -</b>
<b>Installation of Simple Shutdown Software.....</b>	<b>- 7 -</b>
<b>Shutdown Parameter Settings .....</b>	<b>- 12 -</b>
<b>Startup and Shutdown of the Agent .....</b>	<b>- 14 -</b>
<b>Shutdown Sequence .....</b>	<b>- 14 -</b>
<b>Uninstallation of Simple Shutdown Software .....</b>	<b>- 15 -</b>

## **The intended usages**

Omron Companies shall not be responsible for conformity with any standards, codes or regulations which apply to the combination of the Product in the Buyer's application or use of the Product. At Buyer's request, Omron will provide applicable third party certification documents identifying ratings and limitations of use which apply to the Product. This information by itself is not sufficient for a complete determination of the suitability of the Product in combination with the end product, machine, system, or other application or use. Buyer shall be solely responsible for determining appropriateness of the particular Product with respect to Buyer's application, product or system. Buyer shall take application responsibility in all cases.

NEVER USE THE PRODUCT FOR AN APPLICATION INVOLVING SERIOUS RISK TO LIFE OR PROPERTY WITHOUT ENSURING THAT THE SYSTEM AS A WHOLE HAS BEEN DESIGNED TO ADDRESS THE RISKS, AND THAT THE OMRON PRODUCT(S) IS PROPERLY RATED AND INSTALLED FOR THE INTENDED USE WITHIN THE OVERALL EQUIPMENT OR SYSTEM.

## **Software License Terms**

### **1.WARRANTY**

- (1) The warranty period for the Software is one year from the date of purchase, unless otherwise specifically agreed.
- (2) If the User discovers defect of the Software (substantial non-conformity with the manual), and return it to OMRON within the above warranty period, OMRON will replace the Software without charge by offering media or download from OMRON's website. And if the User discovers defect of media which is attributable to OMRON and return it to OMRON within the above warranty period, OMRON will replace defective media without charge. If OMRON is unable to replace defective media or correct the Software, the liability of OMRON and the User's remedy shall be limited to the refund of the license fee paid to OMRON for the Software.

### **2.LIMITATION OF LIABILITY**

- (1) THE ABOVE WARRANTY SHALL CONSTITUTE THE USER'S SOLE AND EXCLUSIVE REMEDIES AGAINST OMRON AND THERE ARE NO OTHER WARRANTIES, EXPRESSED OR IMPLIED, INCLUDING BUT NOT LIMITED TO, WARRANTY OF MERCHANTABILITY OR FITNESS FOR PARTICULAR PURPOSE. IN NO EVENT, OMRON WILL BE LIABLE FOR ANY LOST PROFITS OR OTHER INDIRECT, INCIDENTAL, SPECIAL OR CONSEQUENTIAL DAMAGES ARISING OUT OF USE OF THE SOFTWARE.

(2) OMRON SHALL HAVE NO LIABILITY FOR DEFECT OF THE SOFTWARE BASED ON MODIFICATION OR ALTERNATION TO THE SOFTWARE BY THE USER OR ANY THIRD PARTY.

(3) OMRON SHALL HAVE NO LIABILITY FOR SOFTWARE DEVELOPED BY THE USER OR ANY THIRD PARTY BASED ON THE SOFTWARE OR ANY CONSEQUENCE THEREOF.

3. APPLICABLE CONDITIONS USER SHALL NOT USE THE SOFTWARE FOR THE PURPOSE THAT IS NOT PROVIDED IN THE ATTACHED USER MANUAL.

4. CHANGE IN SPECIFICATION The software specifications and accessories may be changed at any time based on improvements and other reasons.

5. ERRORS AND OMISSIONS The information in this manual has been carefully checked and is believed to be accurate; however, no responsibility is assumed for clerical, typographical, or proofreading errors, or omissions.

### **Request during Operation**

1. The contents of this manual and this software are subject to change without notice.
2. Although all possible effort has been expended to the contents of this manual and this software, contact Omron if any inaccuracies or points of note are found.
3. Some parts of the screens shown in this manual may differ from the actual screens.

Windows and other names of Windows are trademarks or registered trademarks of Microsoft Corporation USA.

Company names and product names found in this manual are trademarks or registered trademarks of their respective companies.

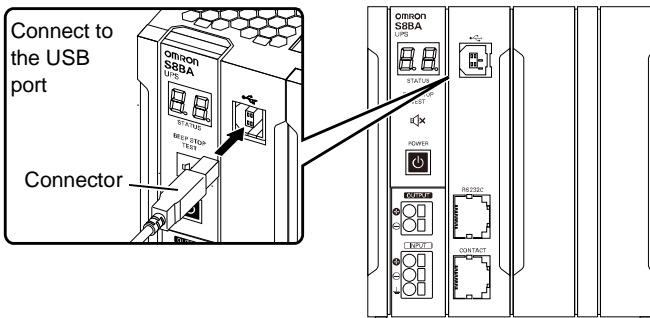
**© OMRON Corporation. 2017 - 2018 All Rights Reserved.**

## Connection Method to the UPS

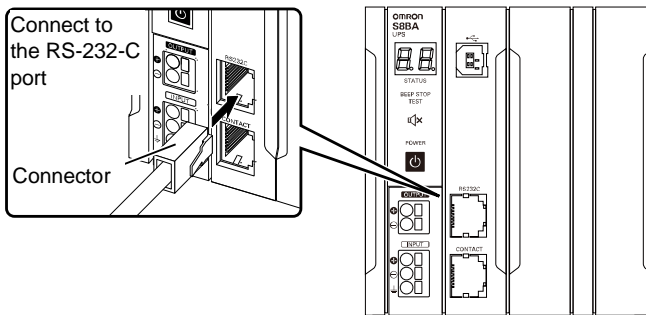
This section describes the procedures for connecting the Uninterruptible Power Supply (UPS) S8BA series to the computer. Connect the UPS to the computer by using the following procedure.

1. Connect the UPS to the computer.
  - Connecting via USB port: Use the USB cable that comes with the UPS.
  - Connecting via RS-232C port: A separately sold transmission cable (Model S8BW-C01) is required.

### ■ Connecting via the USB port

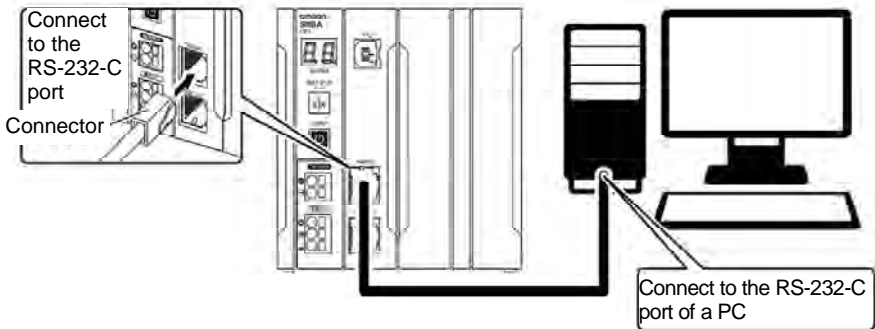


### ■ Connecting via the RS-232C port



Connection example: S8BA-24D24D120LF

2. Once the UPS and computer have been connected, install this software.



### [Precautions when connecting the cable]

- Use the USB cable that comes with the UPS when connecting the USB ports of the computer and UPS.  
Use the separately sold communication cable (Model S8BW-C01) to connect the RS-232C port of the UPS and the serial port of the computer.
- For some computers with two serial ports, the BIOS setting concerning serial 2 (serial B) of the computer is disabled. To use the serial 2 (serial B), it is necessary to "Enable" this setting. Checking or changing the BIOS setting of a computer differs depending on the type of computer. Refer to the instruction manual of your computer or contact your computer manufacturer's support center.

### <<Precautionary Request>>

- If set for "Auto-shutdown of UPS following OS shutdown" and if power has been recovered while auto-shutdown of the UPS is proceeding, a power outage may occur. Even if power has been recovered while auto-shutdown is proceeding, the UPS output will temporarily stop after the set time has elapsed. In this case, do not turn on the computer until the UPS has completely restarted following power recovery.
- If you are considering a system where the computer auto-restarts following recovery of input power, select a computer where the computer restarts without the need of pressing the power switch of the computer when the input power is supplied. For computer operations when the input power is supplied, refer to the computer's instruction manual or contact your computer manufacturer's support center.

## **Before Installing the Software**

This section describes those items which should be kept in mind before installation of the software.

### **[Precautions upon Installation]**

- Start installation of this software after confirming that the OS is able to correctly shutdown in the computer environment to be used. If this software is installed in an environment where correct shutdown cannot be performed, shutdown by this software cannot be correctly performed.
- If other auto-shutdown software is being used on the computer, first uninstall the software and restart the OS and then perform installation of this software. For uninstallation of each software, refer to the respective instruction manuals.
- Before installing this software, read “Connection Method to the UPS” to connect the UPS to the computer.
- This software cannot be used with any device other than Omron's UPS. For UPS models which can be used with this software, refer to the “Operational Environment”. For the newest information, refer to our website.

# Installation of Simple Shutdown Software

## 1. Operational Environment

Before installation, check your operational environment.

Enabled Computer	DOS/V computer	
Operationally-checked OS and Platform	Windows 11 / 10 Windows Server 2022 / 2019 / 2016 / 2012R2 / 2012 Windows Server IoT 2019 for Storage Windows Storage Server 2016 / 2012R2 / 2012 Windows 10 IoT Enterprise LTSC	x86 AMD64 EM64T
RAM	More than 128MB	
Hard Disk Capacity	More than 80MB	
Interface	USB / RS232C	
Uninterruptible Power Supply (UPS)	S8BA-24D24D120LF / S8BA-24D24D240LF S8BA-24D24D360LF / S8BA-24D24D480LF S8BA-24D24D480SBF / S8BA-24D24D960SBF	

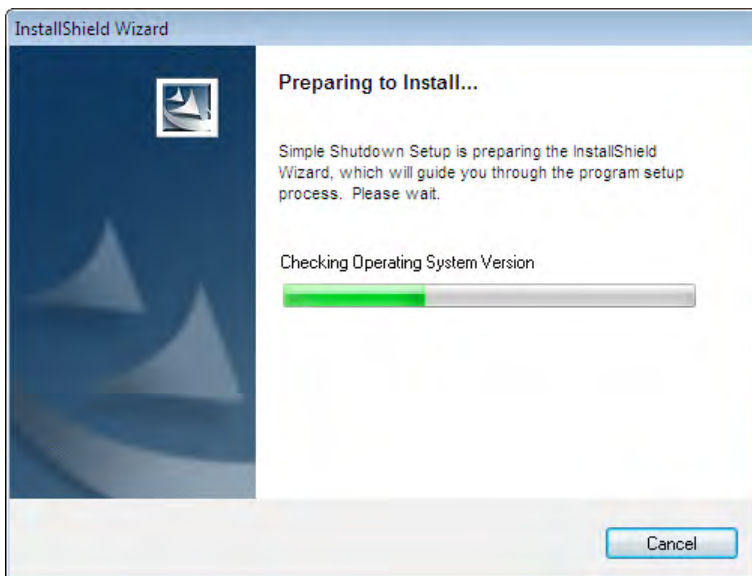
## 2. Installation Procedure

### <<Attention>>

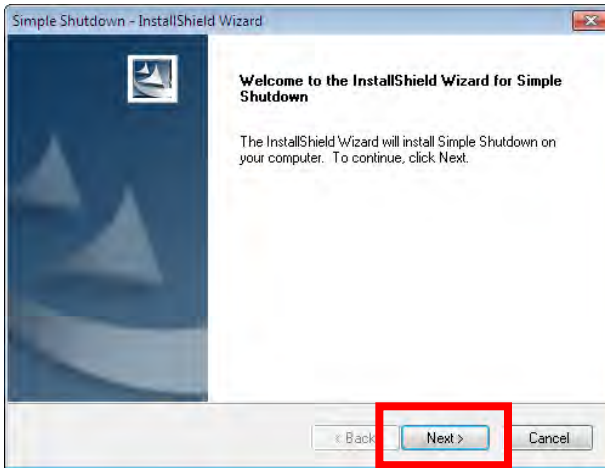
When installing the shutdown software, log in to the computer with the user name of the administrator authority.

The following is for installation on a Windows 8.1 platform.

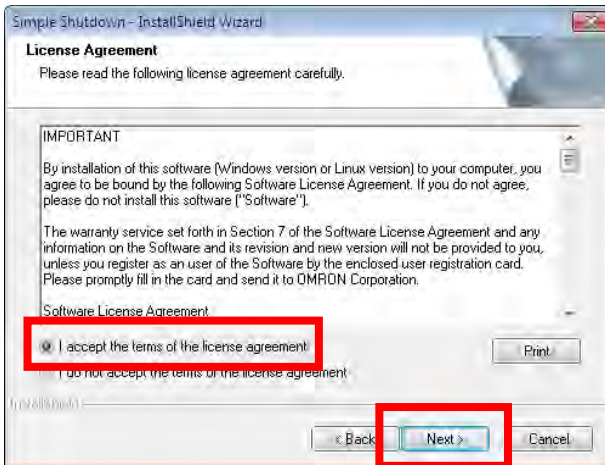
- (1) Decompress the downloaded file and move to the “Release” folder of the decompressed folder.
- (2) Execute “setup.exe” within the “Release” folder.



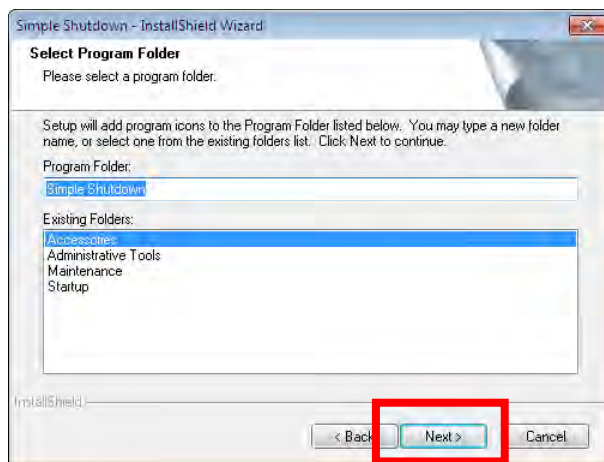
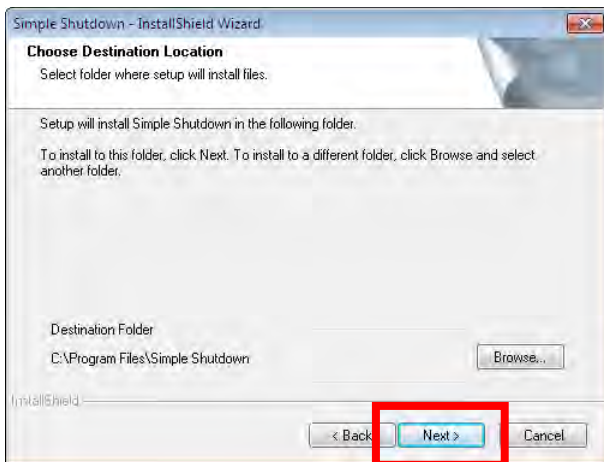
- (3) The following screen will be displayed. Click [Next].



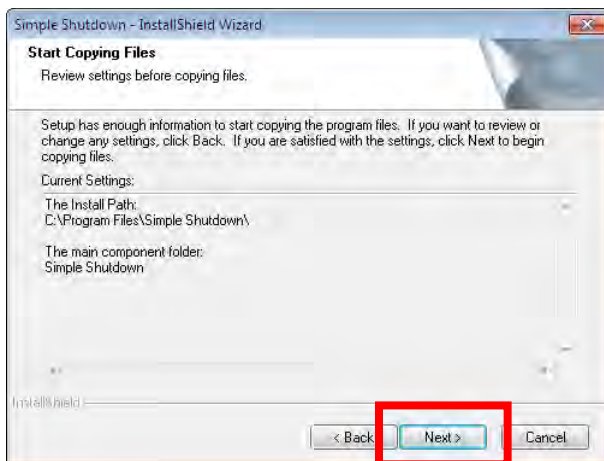
- (4) The license agreement screen will be displayed. Upon confirming the content, select "I accept the terms of the license agreement" and click [Next].



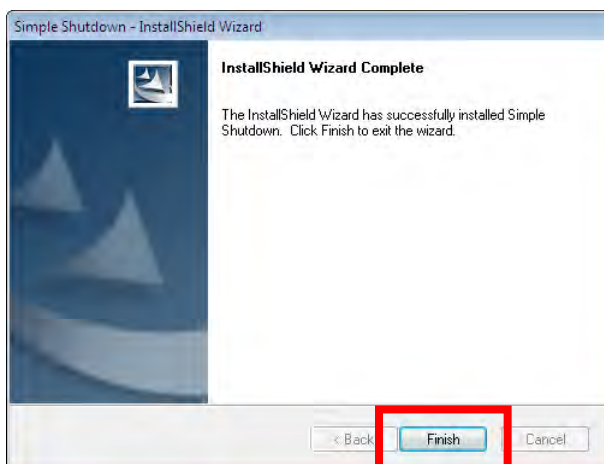
- (5) The following screen will be displayed. Check the content and click [Next].



- (6) The following screen will be displayed. Check the content and click [Next].  
Copying of the files will start.



- (7) After the files have finished copying, the following screen will be displayed. Click [Finish].




Installation of this software has been completed.

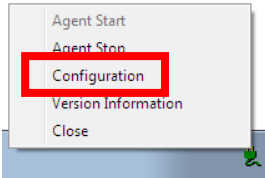
Next, perform setting of the shutdown parameters.  
For details, refer to the “Setting of Shutdown Parameters” on the next page.

## Shutdown Parameter Settings

This section describes the setting of shutdown parameters of the computer connected to the UPS.

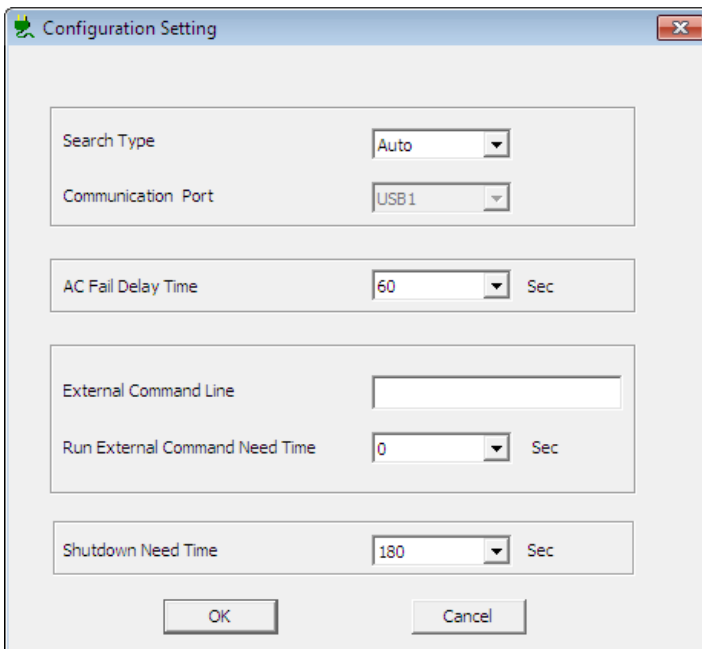
### [Procedure]

1. Right-click the power plug mark  on the task tray and click “Configuration” from the menu.



2. The following screen will be displayed. Set the shutdown parameters.

<<Configuration Setting>>



Search Type	Auto
Communication Port	USB1
AC Fail Delay Time	60 Sec
External Command Line	
Run External Command Need Time	0 Sec
Shutdown Need Time	180 Sec

OK Cancel


- (1) Specifying the communication port  
Set the port connecting the UPS.  
Auto: Searches for both USB and COM ports  
Manual: Specifies the COM port (select port from “communication port”)  
Semi-auto: Only searches for the USB port
- (2) Standby time  
Set the standby time between an abnormality occurrence of the input power supply and start of shutdown.  
Even if the UPS detects an abnormality occurrence of the input power, shutdown operation will not start until the standby time set here has elapsed.
- (3) External command line  
Execute a set external command upon start of shutdown.  
Enter the external command you want to execute.  
If you are using this function, set the execution time of the external command.  
  
External command execution time  
Select the time from execution to conclusion of the external command when an external command has been set in the external command line.
- (4) Required time for shutdown  
Select the time required for the OS to shut down and the UPS to stop.

After concluding the settings, click the [OK] button and exit environmental settings.

## Startup and Shutdown of the Agent

This section describes the method of agent startup and shutdown.

### [Procedure]

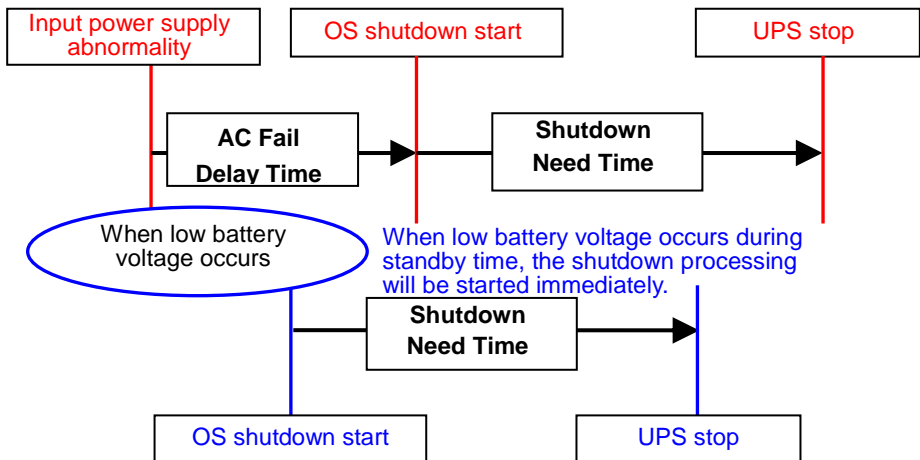
Right-click the power plug mark  on the task tray and click “Agent Start” or “Agent Stop” from the menu.

### Supplementary Explanation.

#### [1. Agent Stop/Start]

You can perform start-up or shutdown of the master agent.

## Shutdown Sequence



## Uninstallation of Simple Shutdown Software

### [Procedure]

#### <<Attention>>

To uninstall the shutdown software, log in to the computer with the user name of the administrator authority.

- (1) Select “Add or Delete Programs” from the “Control Panel” and perform uninstallation of “Simple Shutdown”.
- (2) Once uninstallation is complete, restart the OS.

#### <<Remarks>>

The operating procedure may differ in part depending on the OS used.

- Reprinting of part or the entire contents of this manual is strictly forbidden.
- The contents of this manual are subject, without notice, to modifications for the sake of improvement.



Rev.K1L-D-15020D