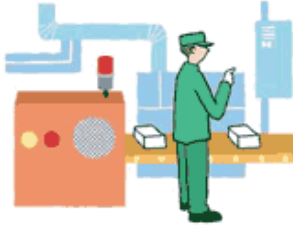


Applications

Annunciator



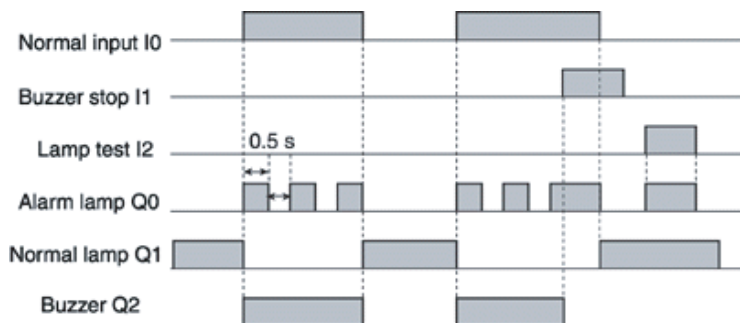
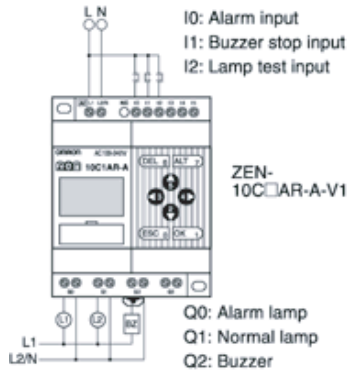
● Flashing Pulse Timer Application



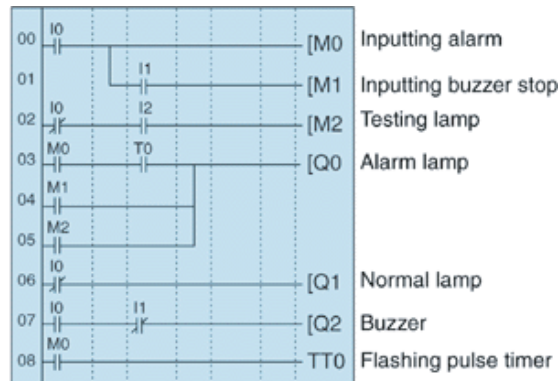
The ZEN can be used to make an alarm light flash when errors occur.

In this example, a flashing pulse timer is used to make an alarm light flash when errors occur. Ladder programs can be created easily when a flashing pulse timer is used.

■ System Configuration



■ Program Example



■ Parameter Settings

Flashing Pulse Timer T0

T0	F	S	A
TRG			
RES	00	50	

Set to flash at 0.5 s intervals.