

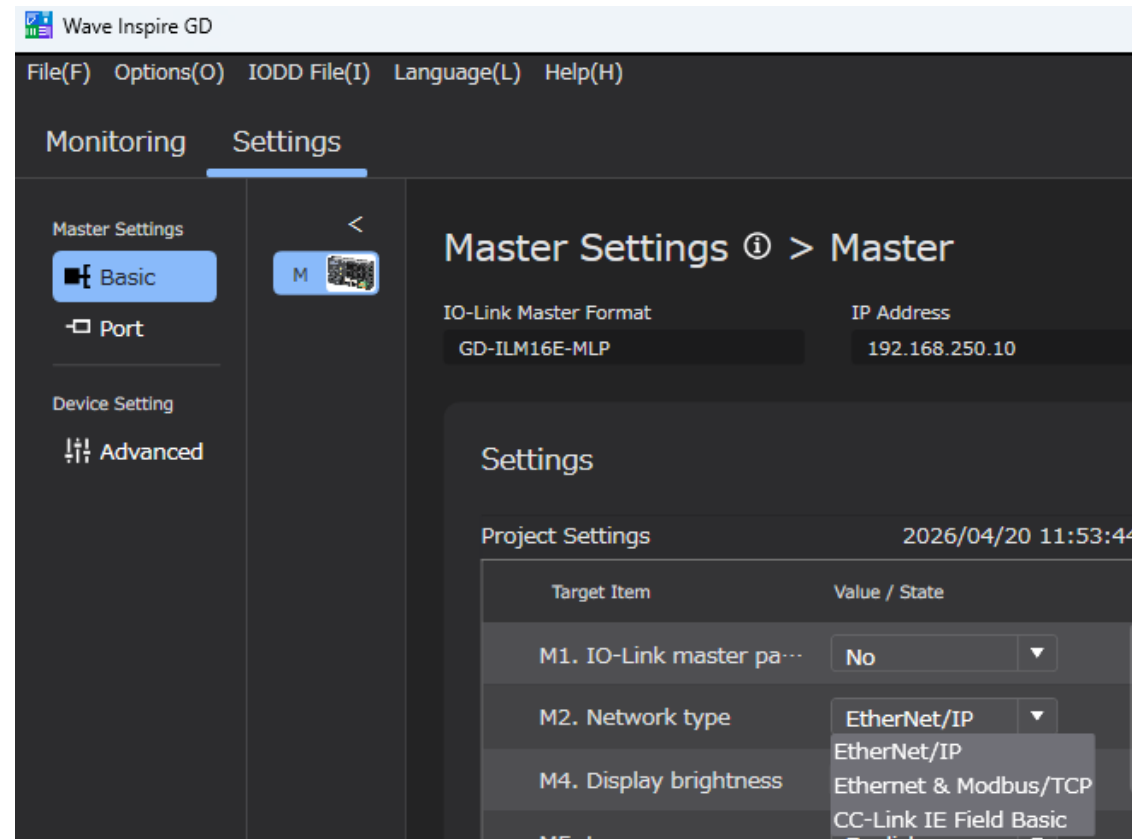
Modbus TCP collector to collect data from the IO-Link master unit GD series

Data collection of the IO-Link master unit GD series.

GD Series Settings

Set the "M2 Network Type" of GD-ILM16□-MLP to "Ethernet & Modbus/TCP".

※GD Series is set by "Wave Inspire HUB". [PCツール Wave Inspire HUB : サポートツール : オムロン](#) [I-Web](#) [メニュー](#)



Modbus TCP collector to collect data from the IO-Link master unit GD series

DX1 Series Settings

To collect data from the GD series, "Modbus TCP collector" is used.

"Modbus TCP Collector" retrieves data on a word-by-word basis, so the required data is extracted by "data Conversion".

Ex.) Collecting data on control output 1/2, light intensity level and detection value from GD CH0:E3AS-HL

Please refer to the manuals and datasheets for details.

GD Series : [Refer to GD-ILM\[M\]\[L\]-MLP IO-Link Master Unit User's Manual EtherNet/IP Edition/ No. Z514](#)

[I-Web](#) [メニュー](#)

E3AS-HL : [Refer to E3AS-HL150\[M\]/500\[M\] Series CMOS Laser Sensor Instruction Sheet \(INDEX LIST\) / No. 5603669-0](#)

