

# Network Configurator Ver. 2.21 Release Notes

This document summarizes the Network Configurator for DeviceNet Safety Version.2 update.

## 1. Upgrading Network Configurator Version

The following is the upgrade procedure of Network Configurator Ver.2.0 or Ver.2.1 to Ver. 2.2.

To upgrade your Network Configurator, the current version installed shall be Ver.2.00, Ver.2.01, Ver.2.10 or Ver.2.20.

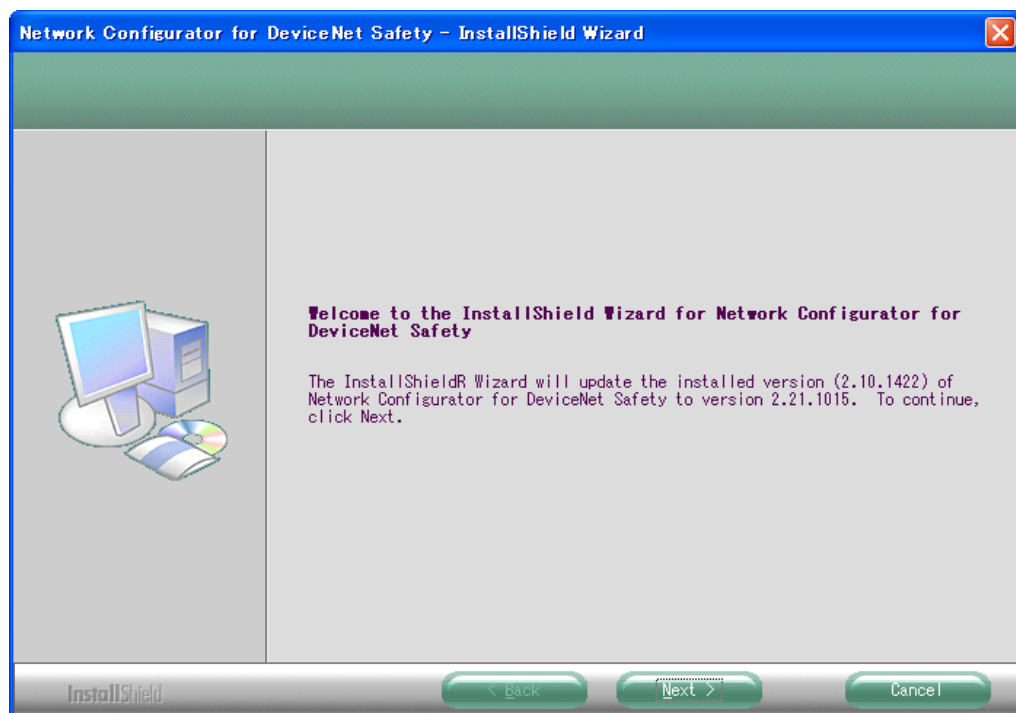
(The upgrade procedure does not apply to the other versions.)

### 1.1. Upgrade Procedure

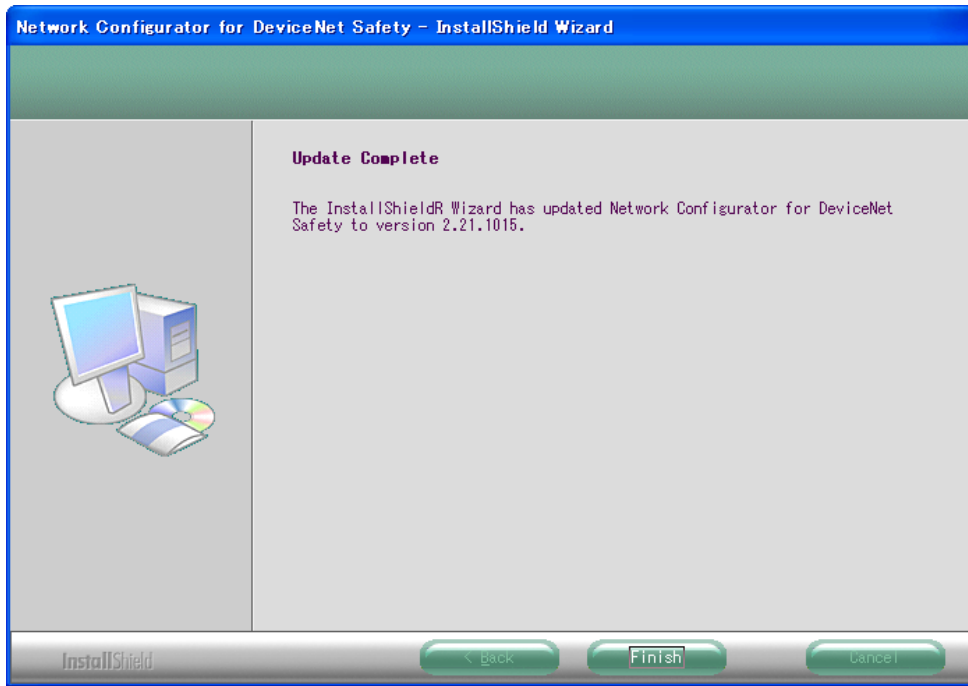
1. Execute the update file.

Update file: NetworkConfigurator\_for\_Safety\_v2.21.1015\_Update\_Us.exe

2. The following window is displayed.

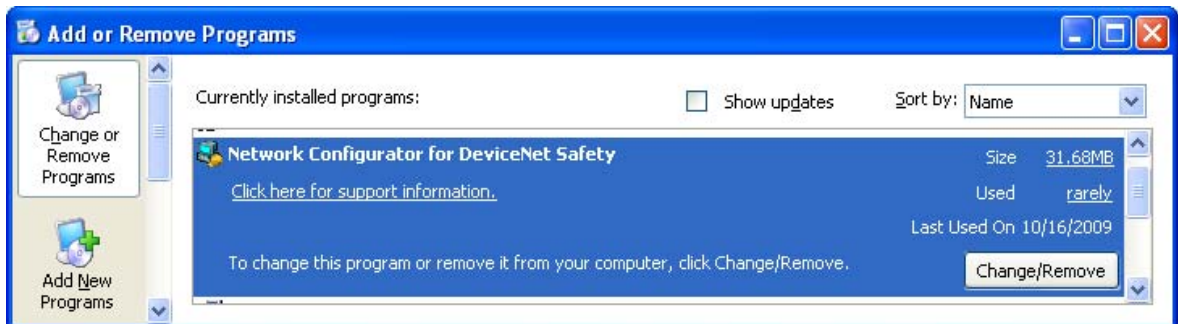


3. Follow the instruction in the window and click the Next Button to continue.
4. Installation starts.
5. The following window is displayed and the installation completes.



## 1.2. Confirm Version

Go to Control Panel > Add or Remove Programs, and find “Network Configurator for DeviceNet Safety”.



If the version number in the Support Information dialog is 2.21.1015, the upgrade has been successfully installed.



Please refer to Chapter 2 to 5 for the updated functions.

## 2. Update Details from Ver.2.00 to Ver.2.01

The details of the Network Configurator Ver.2.01 update are as follows:

### 2.1. Reuse Network structure information

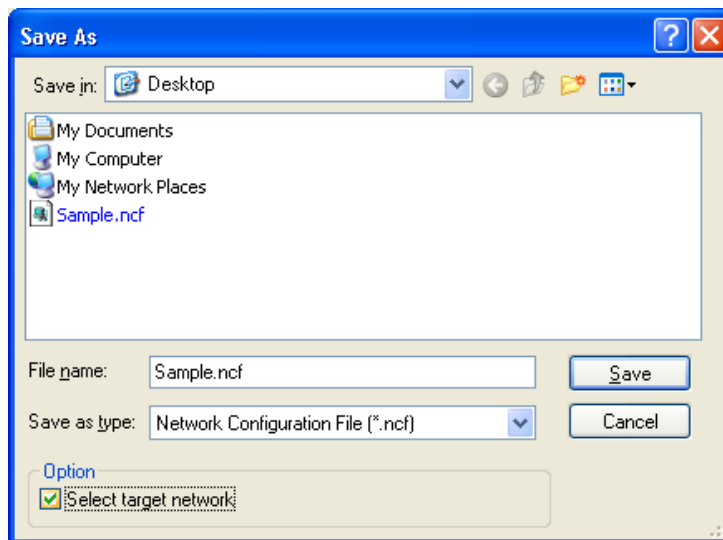
From Ver.2.01, a user can reuse the Network structure information.

For example, User\_A designed DeviceNet\_1, User\_B designed DeviceNet\_2.

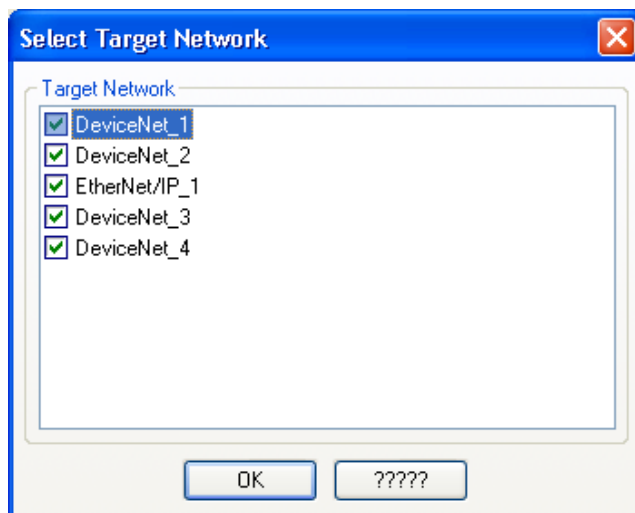
Then, User\_C can reuse all device information (incl. Program, parameter setting) that is designed by User\_A and User\_B as one project file.

Please use the following procedure to save Network structure information.

- 1) Open some project file that includes two or more Network information.
- 2) Select [File] | [Save As] from menu.



- 3) This window displays “Select target network” check box as option.
- 4) With this check, following window will be displayed.

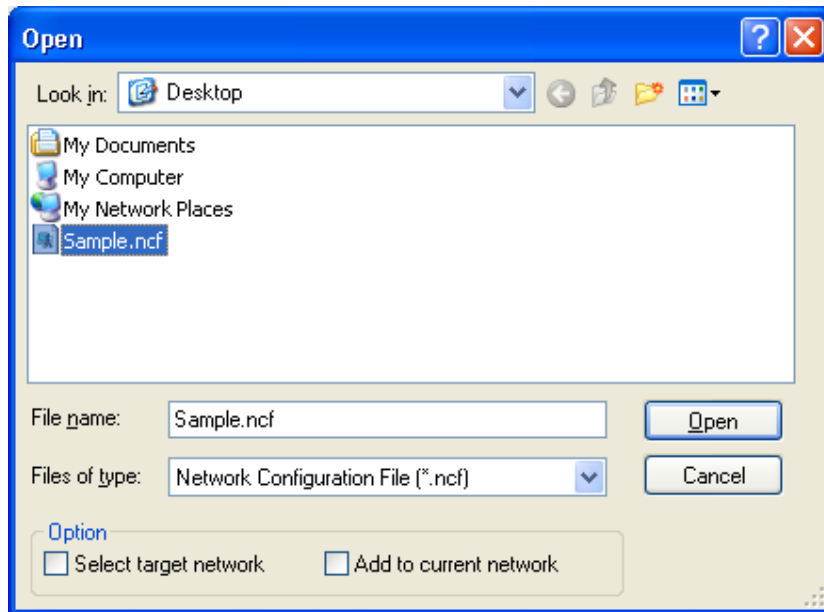


- 5) Select a Network name that will be saved to the Project file.

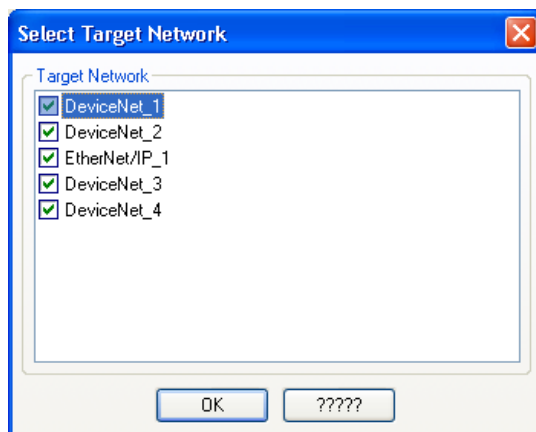
Then, selected Network structure information is saved into the Project file.

Next, please use following procedure to reuse saved file.

- 1) Select [File][Open] from Menu.
- 2) This window will be displayed.



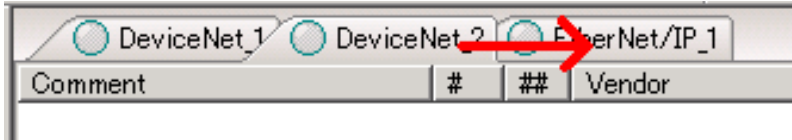
- 3) This window displayed “Select target network” and “Add to current network” check box as option.
- 4) With “Select target network” check, following window will be displayed.



- 5) Select network name that a user wants to use.
- 6) Then, selected network information will be displayed on the Network Configurator.
- 7) With “Add to current network” check, the selected network information will be added into current Network.

## 2.2. Movable network tab

From Ver.2.01, a user can move the Network Tab by Drag and Drop as following picture.



## 2.3. Print page title of program

From Ver.2.01, Programming tool for NE1A series can print the each page title of Program Data.

Page:	2/4	[#00] NE1A-SC
Author:		
Title:		
PageTitle:	Reset	

### 3. Update Details from Ver.2.01 to Ver.2.10

The details of the Network Configurator Ver.2.10 update are as follows:

#### 3.1. New Function

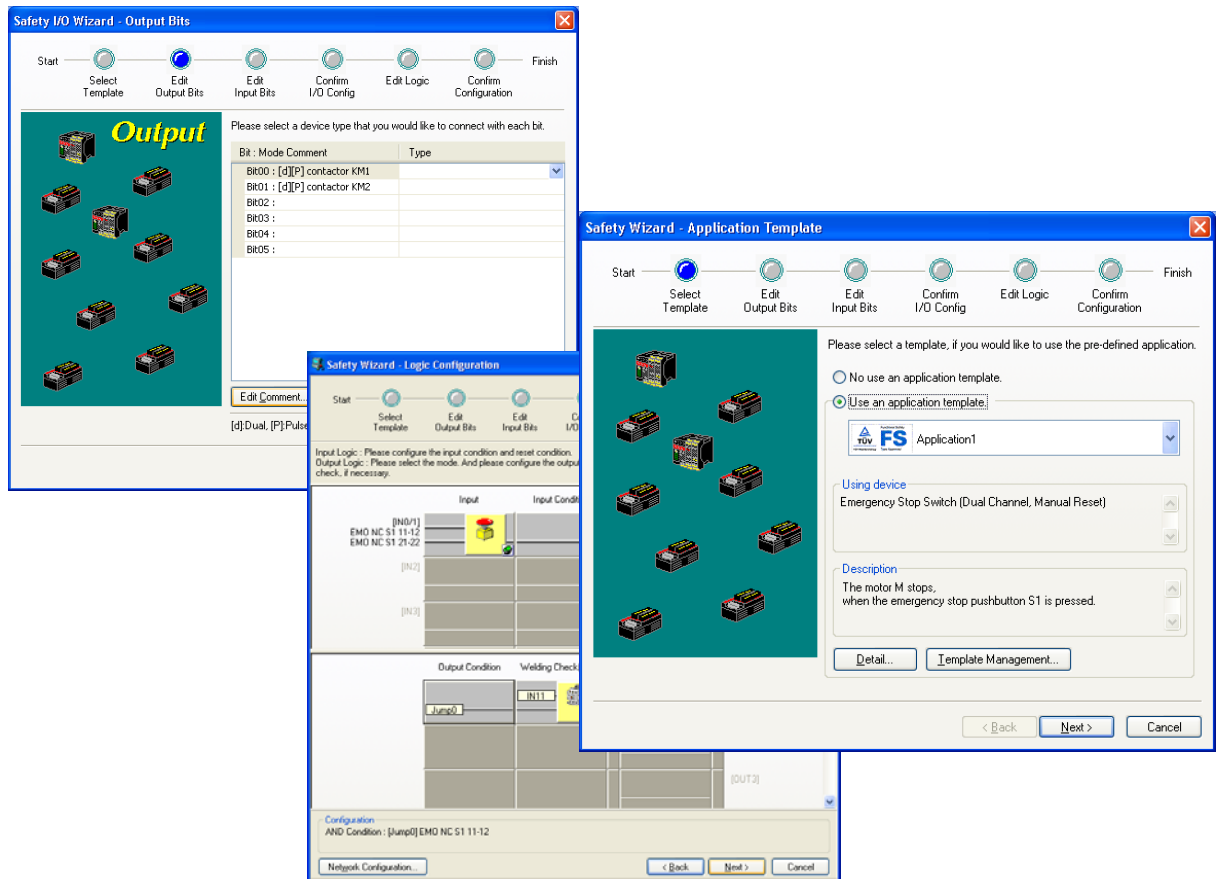
##### 3.1.1.Supports NE0A-SCPU01

Network Configurator for DeviceNet Safety supports new device 'NE0A-SCPU01'.

Following functions are available for 'NE0A-SCPU01' from version 2.10.

##### 3.1.2.NE0A-SCPU01 wizard

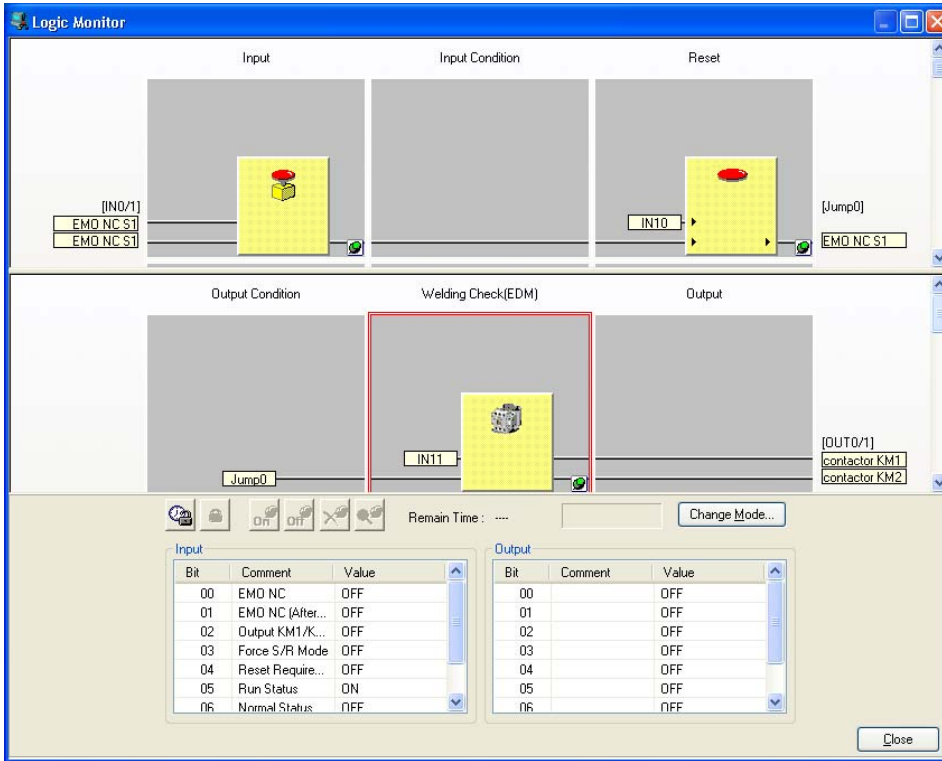
The all parameter setting and editing Logic can be done by wizard function for NE0A. and Application Templates for NE0A is also available.



### 3.1.3. Program Monitoring

Network Configurator can monitor the program of NE0A.

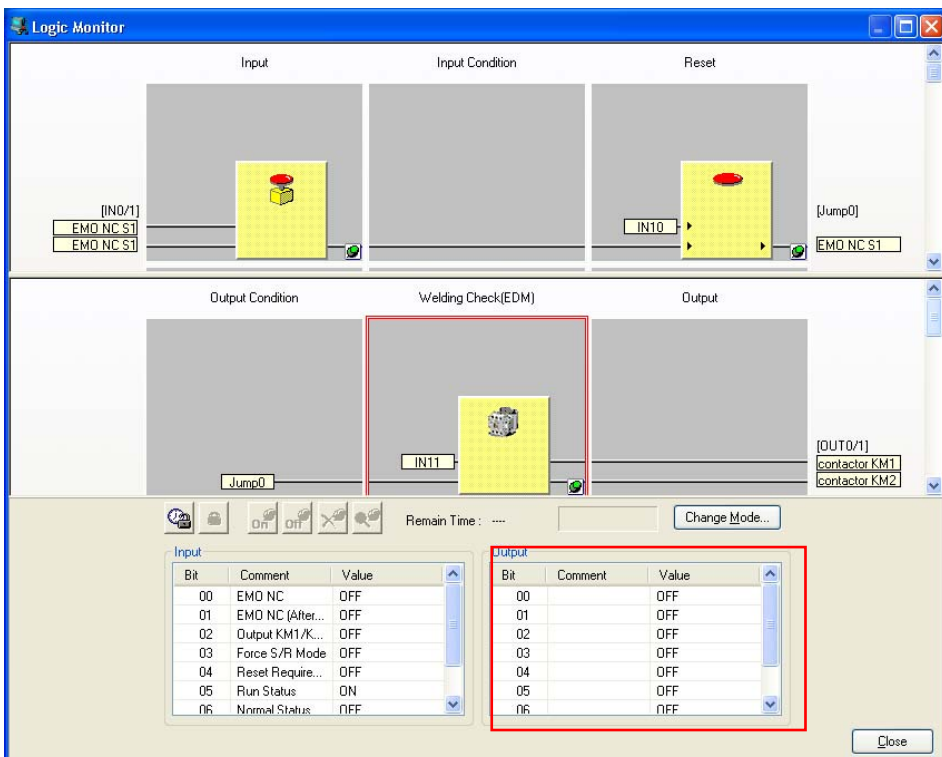
By using Program monitoring function, a user can debug the program with actual device.



### 3.1.4. Force set/ reset

A user can set or reset the signal (that comes from NE1A) on a mandatory.

By using this function, a user can debug the program without NE1A.

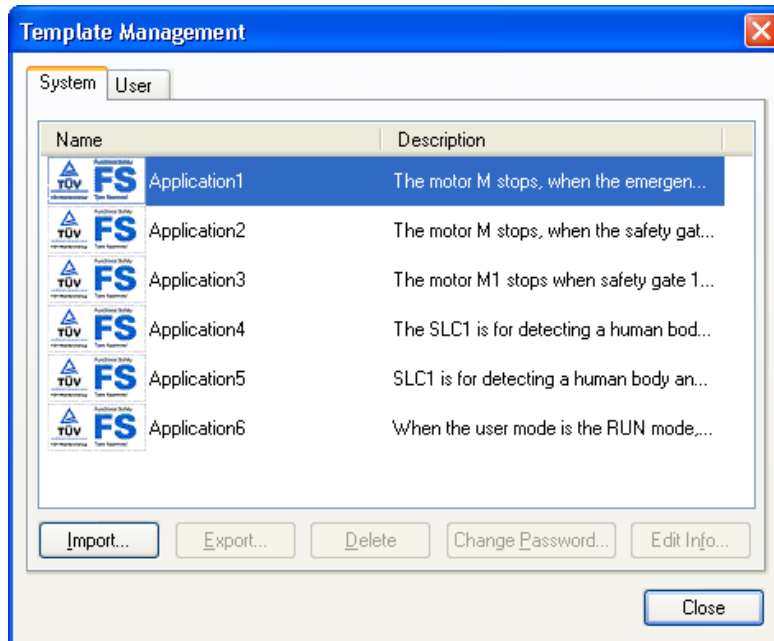


## 3.2. Change function

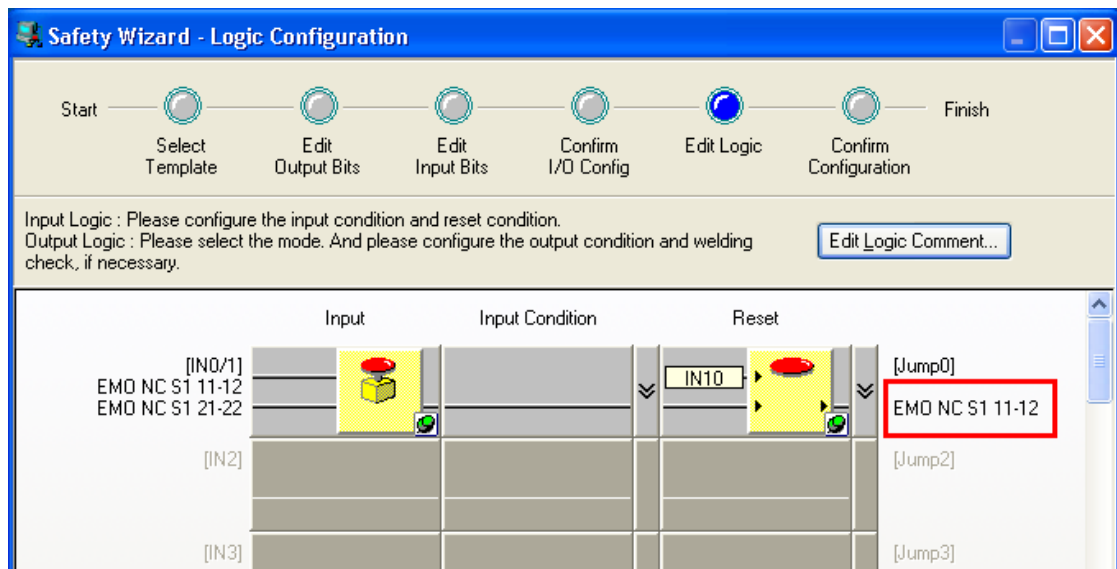
From Ver.2.10, Network Configurator changed following function.

### 3.2.1. Wizard Function for DST1-XD0808SL01

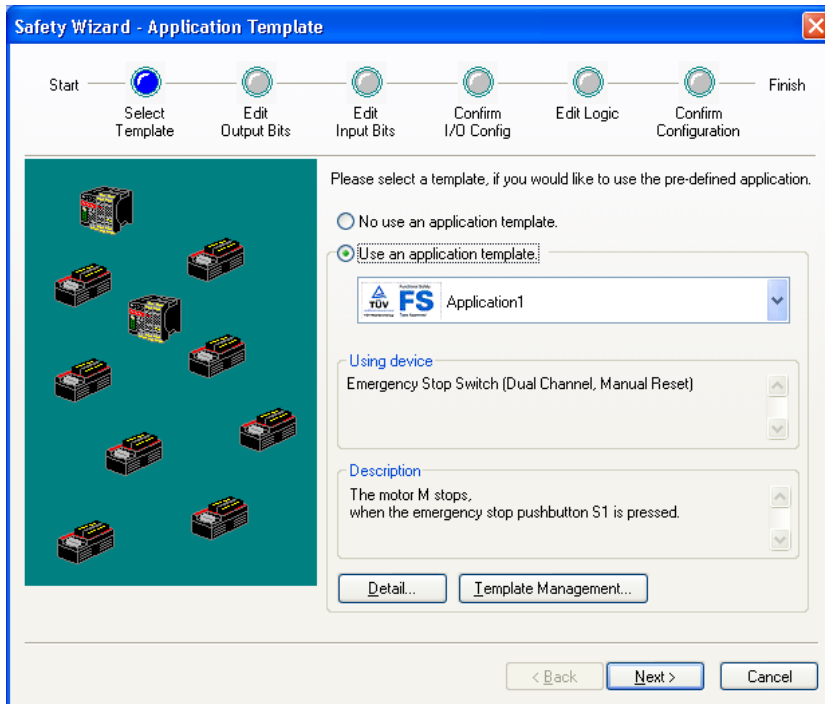
- 1) Application template management function



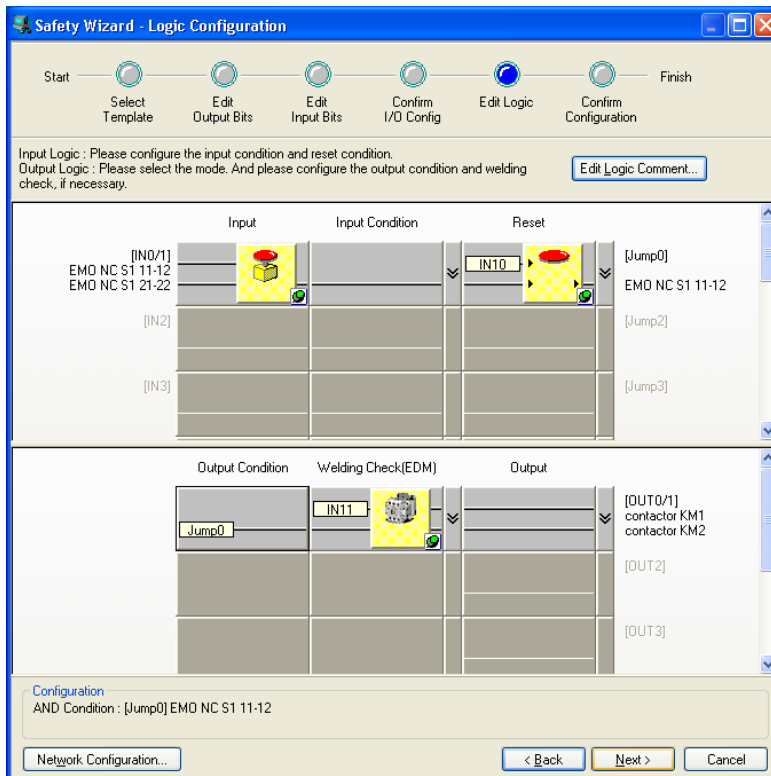
- 2) Logic comments editing function



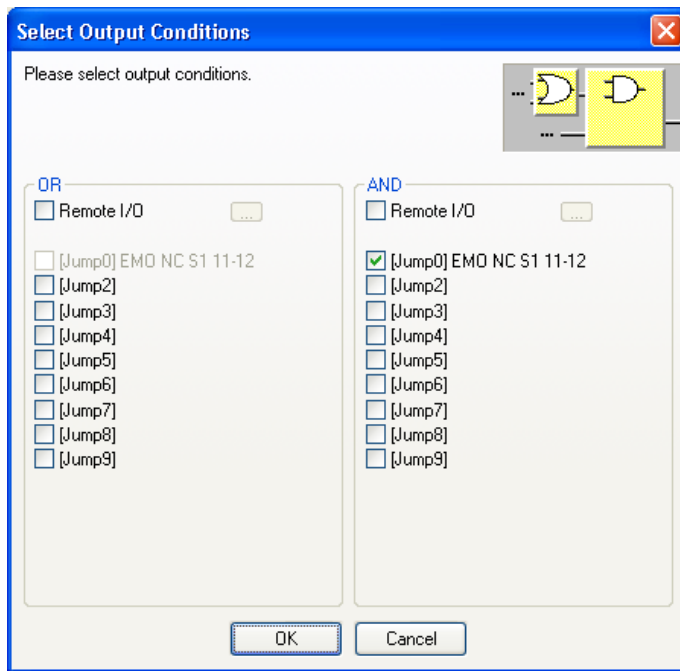
- 3) Change some appearance.
- Template selection displays icon for template.



- Logic wizard window display Input Logic and output logic window at one window.



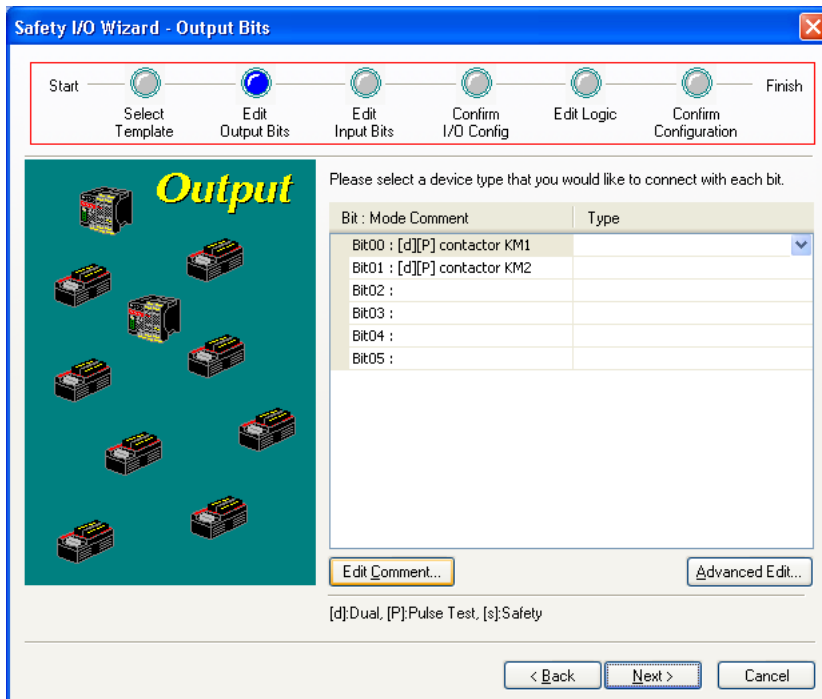
- Input condition/ Output condition setting window display icon for the condition.



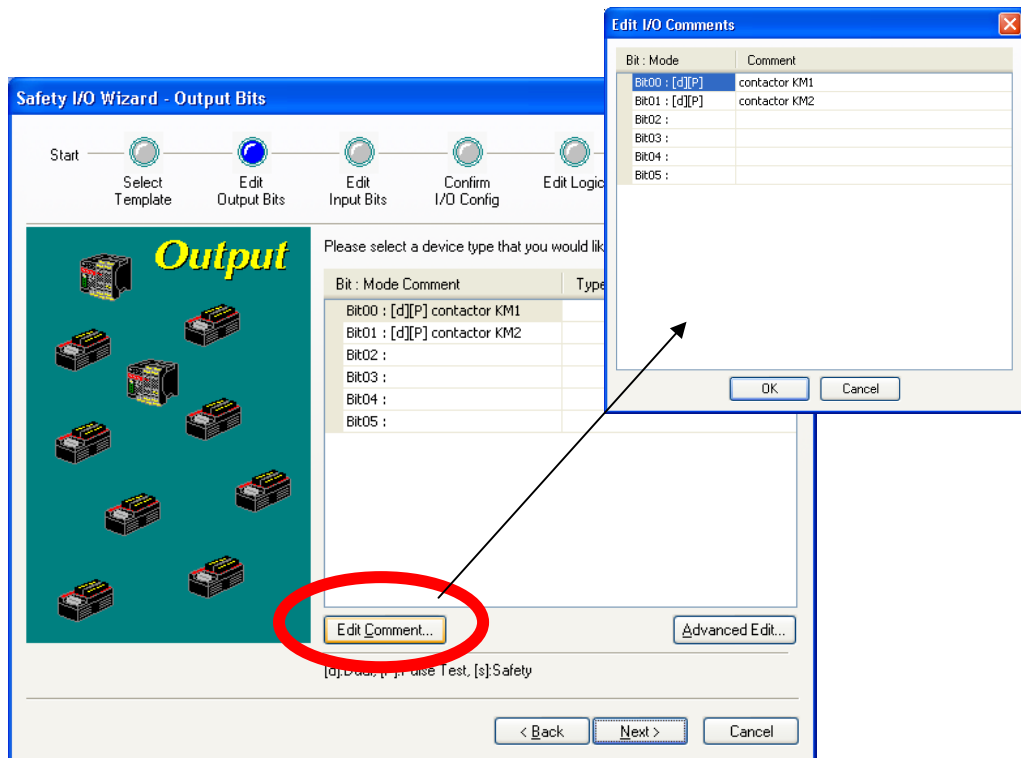
### 3.2.2.IO parameter wizard for DST1-series/NE1A-series/ NE0A-SCPU01

From Ver.2.10, Network Configurator changed following function.

- 1) Skip or Jump the 'wizard process'  
by clicking the button that is displayed on the top of wizard window,  
a user can skip or jump the process of wizard.



- 2) Add 'Comment editing Window'  
Add new window for editing I/O comment.



### 3.3. Other change

This section describes other changes.

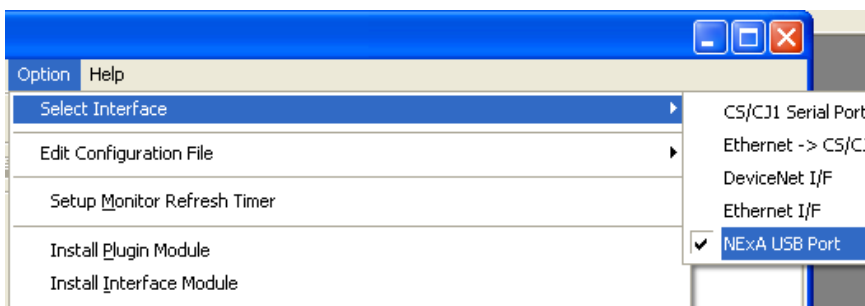
1) Warning message

while executing "change device type" function from Network Configurator, Network Configurator displays warning message.

2) Interface name

We changed the interface name for USB connection between PC and NE1A/NE0A from "NE1A USB Port" to "NExA USB Port".

This interface is available for NE1A-series and NE0A.



## 4. Update Details from Ver.2.10 to Ver.2.20

The details of the Network Configurator Ver.2.20 update are as follows:

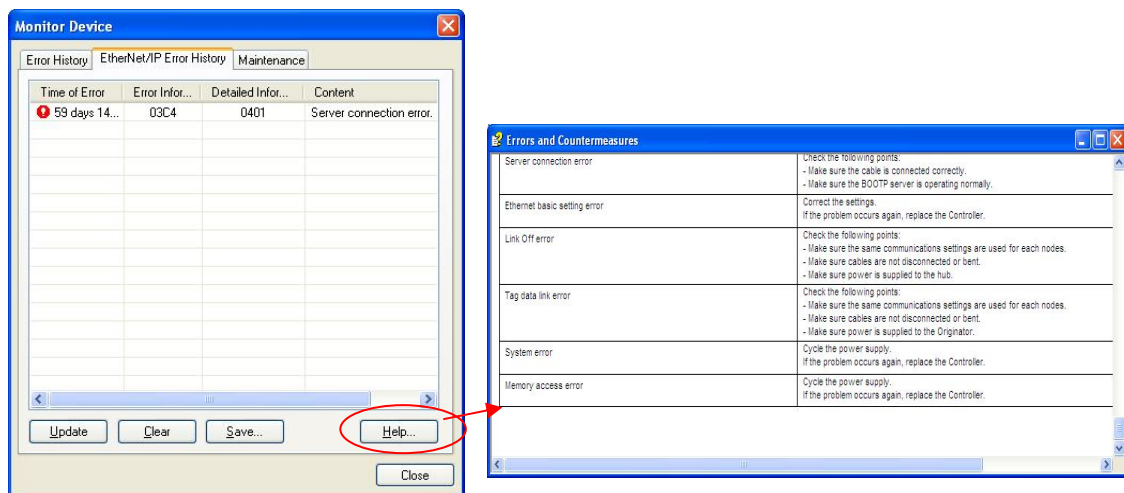
### 4.1. Additional Supported Devices

Support has been added for EtherNet/IP-supported Safety Network Controller NE1A-SCPU-EIP series (NE1A-SCPU01-EIP, and NE1A-SCPU02-EIP). For instruction on how to use NE1A-SCPU-EIP series, refer to the NE1A user's manual (SJLB—302G).

In addition, tag-data-link configurations between EtherNet/IP-supported Safety Network Controller NE1A-SCPU-EIP series and EtherNet/IP Units CS/CJ-series (CS1W-EIP21, CJ1W-EIP21, and CJ2B-EIP21) are now available.

### 4.2. Help in Error History Window

The Help option to show countermeasures against selected errors has been added to the Error History and EtherNet/IP Error History windows for the feature to monitor DeviceNet-Safety devices.



Countermeasures Window

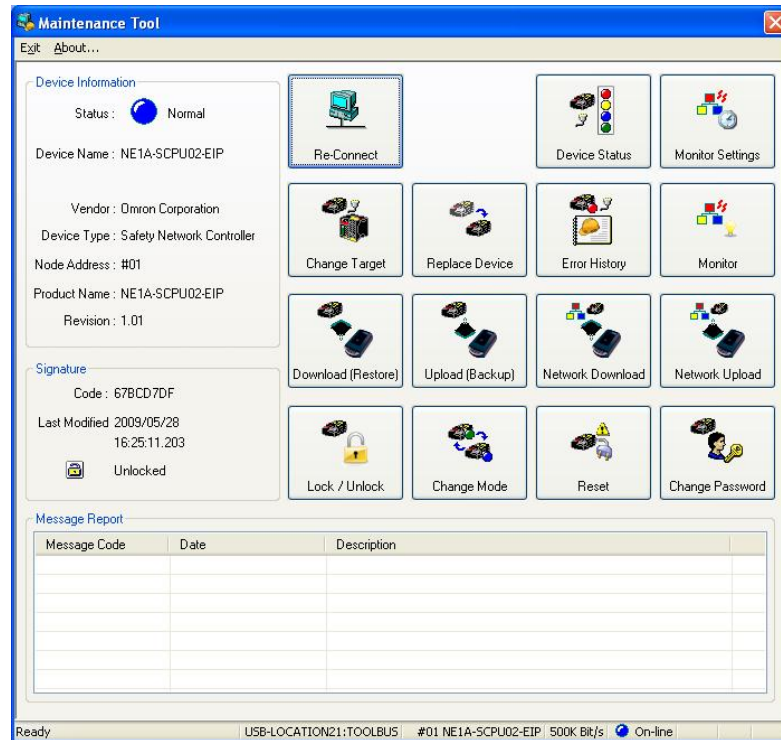
### 4.3. Maintenance Tool

The maintenance tool functions dedicated to maintenance has been added.

The added functions are as follows:

- Replace Device (This allows download of uploaded device parameters to a replaced device.)
- Download (Restore)
- Upload (Backup)
- Lock/Unlock

- Change Mode
- Resets Device
- Change Password
- Error History
- Displaying I/O terminals, device statuses, and maintenance information



For details of the functions and usage of the maintenance tool, refer to the DeviceNet Safety System Configuration Manual (SJLB-301G), Section 9: Maintenance Tool.

#### 4.4. Download in Protect Mode

The password protection for network configuration files has been revised to allow changes in device status or download of device parameters in Protect Mode.

This allows a user to perform maintenance operations such as replacement of a device in the field while protecting a master network configuration file.

Refer to DeviceNet Safety System Configuration Manual (SJLB-301G), Section 3-5-4 Protect Mode for details.

#### 4.5. Windows Vista ® Supported

Support for Windows Vista ® has been added.

## **5. Update Details form Ver.2.20 to Ver.2.21**

The details of the Network Configurator Ver.2.21 update are as follows:

### **5.1. Increase compatibility of Network Configuration File for Ver.2.0/Ver.2.1**

The network configuration file that is created on Ver2.21 can be loaded on Ver2.1X/ Ver2.0X.  
Additionally, the network property window is changed to same window as Ver2.1X / Ver2.0X.