

Network Configurator Ver. 2.20 Release Notes

This document summarizes the Network Configurator for DeviceNet Safety Version.2.20 update.

1. Update Details

The details of the Network Configurator Ver.2.20 update are as follows:

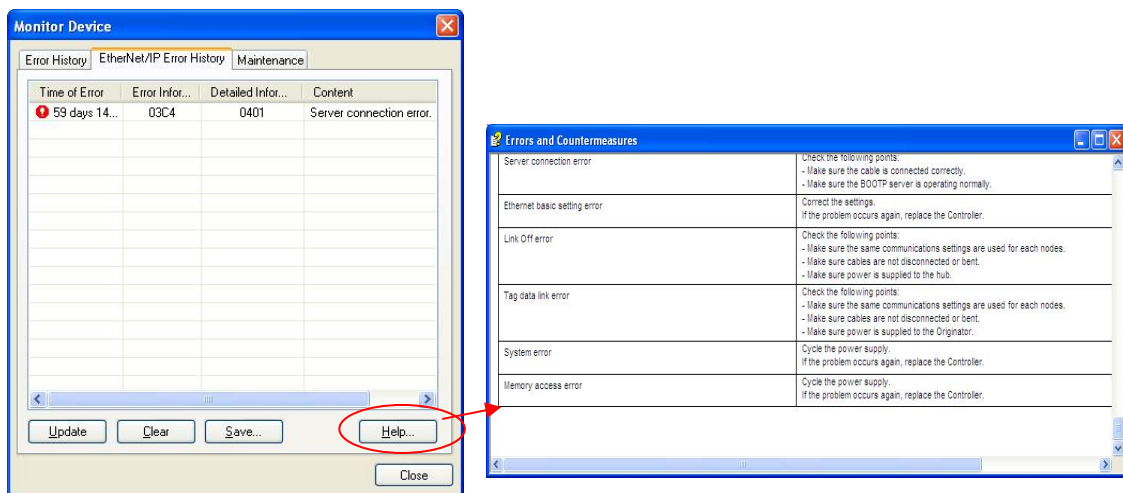
1.1. Additional Supported Devices

Support has been added for EtherNet/IP-supported Safety Network Controller NE1A-SCPU-EIP series (NE1A-SCPU01-EIP, and NE1A-SCPU02-EIP). For instruction on how to use NE1A-SCPU-EIP series, refer to the NE1A user's manual (SJLB—302G).

In addition, tag-data-link configurations between EtherNet/IP-supported Safety Network Controller NE1A-SCPU-EIP series and EtherNet/IP Units CS/CJ-series (CS1W-EIP21, CJ1W-EIP21, and CJ2B-EIP21) are now available.

1.2. Help in Error History Window

The Help option to show countermeasures against selected errors has been added to the Error History and EtherNet/IP Error History windows for the feature to monitor DeviceNet-Safety devices.



Countermeasures Window

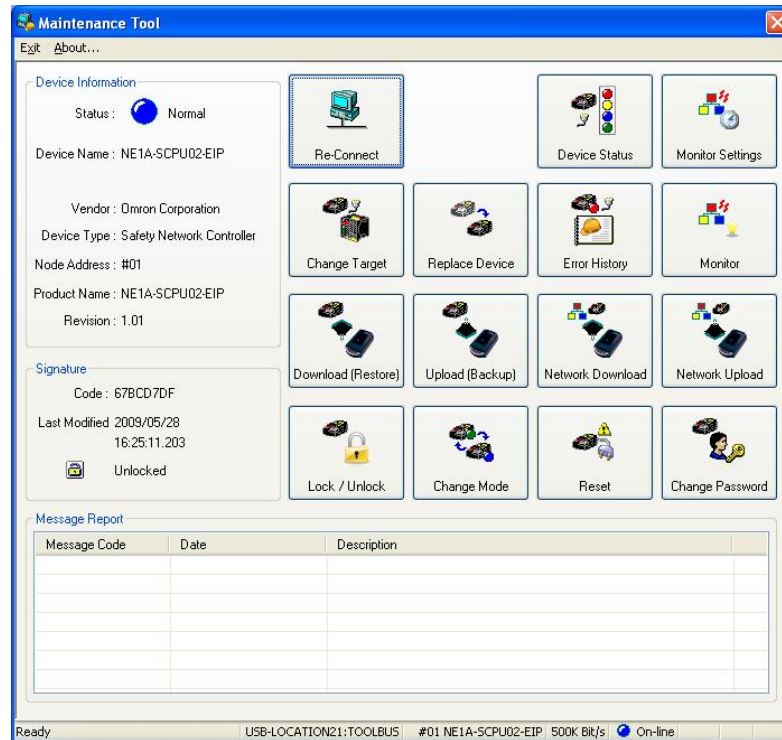
1.3. Maintenance Tool

The maintenance tool functions dedicated to maintenance has been added.

The added functions are as follows:

- Replace Device (This allows download of uploaded device parameters to a replaced device.)

- Download (Restore)
- Upload (Backup)
- Lock/Unlock
- Change Mode
- Resets Device
- Change Password
- Error History
- Displaying I/O terminals, device statuses, and maintenance information



For details of the functions and usage of the maintenance tool, refer to the DeviceNet Safety System Configuration Manual (SJLB-301G), Section 9: Maintenance Tool.

1.4. Download in Protect Mode

The password protection for network configuration files has been revised to allow changes in device status or download of device parameters in Protect Mode.

This allows a user to perform maintenance operations such as replacement of a device in the field while protecting a master network configuration file.

Refer to DeviceNet Safety System Configuration Manual (SJLB-301G), Section 3-5-4 Protect Mode for details.

1.5. Windows Vista® Supported

Support for Windows Vista® has been added.

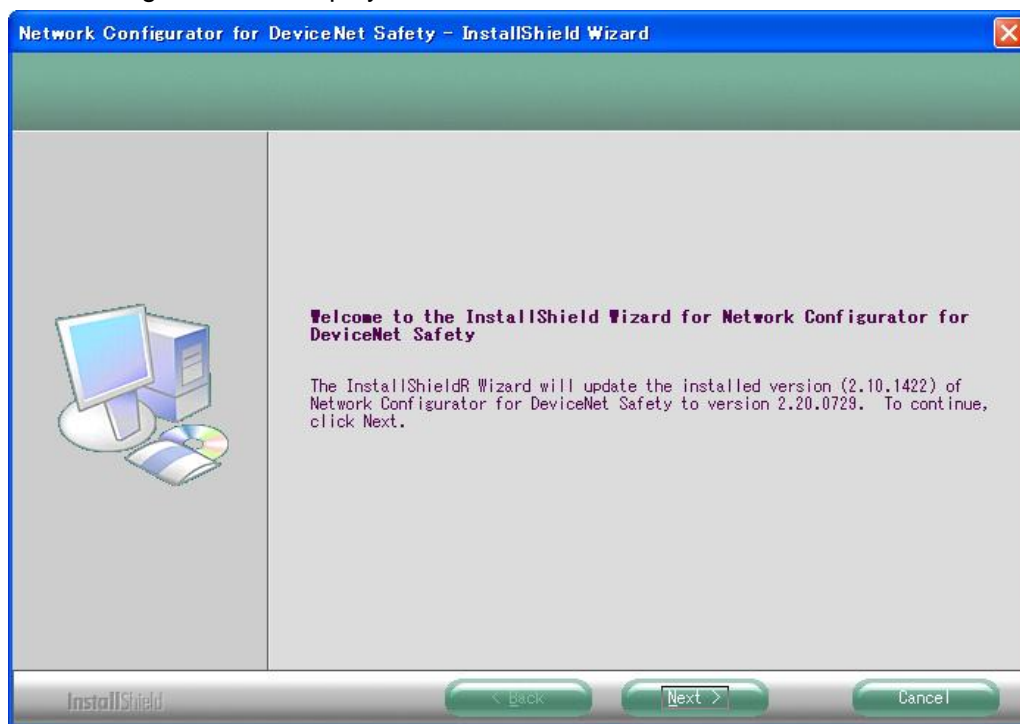
2. Upgrading Network Configurator Version

The following is the upgrade procedure of Network Configurator Ver.2.0 or Ver.2.1 to Ver. 2.2. To upgrade your Network Configurator, the current version installed shall be Ver.2.00, Ver.2.01, or Ver.2.10.

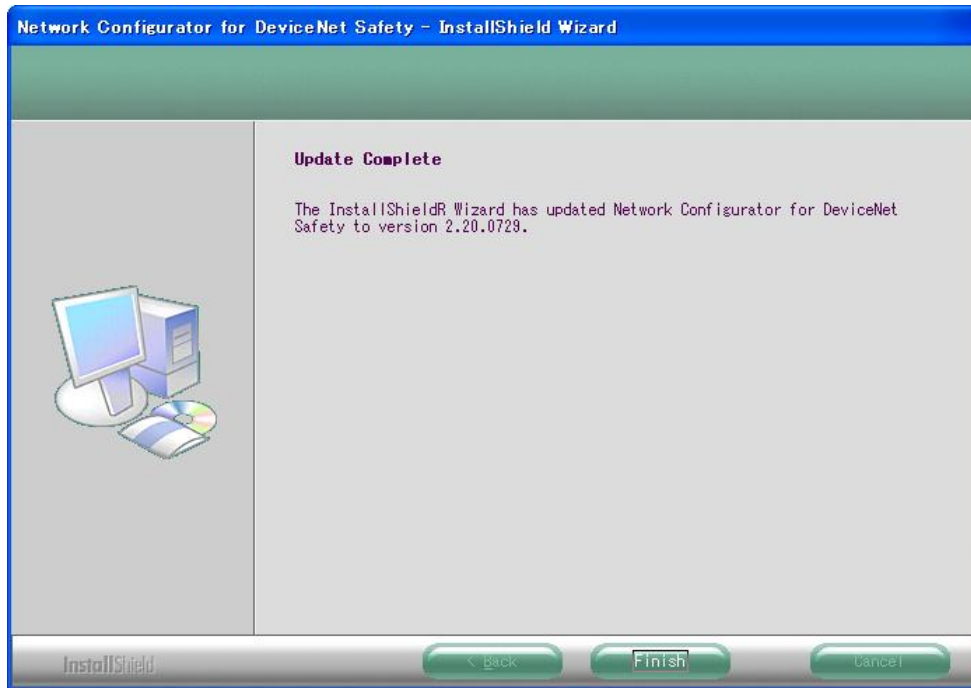
(The upgrade procedure does not apply to the other versions.)

2.1. Upgrade Procedure

1. Execute the update file.
Update file: NetworkConfigurator_for_Safety_v2.20.0729_Update_Us.exe
2. The following window is displayed.

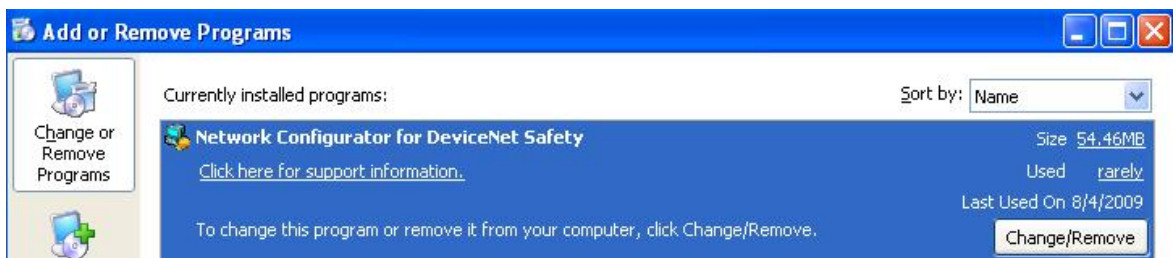


3. Follow the instruction in the window and click the Next Button to continue.
4. Installation starts.
5. The following window is displayed and the installation completes.



2.2. Confirm Version

Go to Control Panel > Add or Remove Programs, and find “Network Configurator for DeviceNet Safety”.



If the version number in the Support Information dialog is 2.20.0729, the upgrade has been successfully installed.

